

## Anti-OGDH Polyclonal Antibody

Cat: K110363P

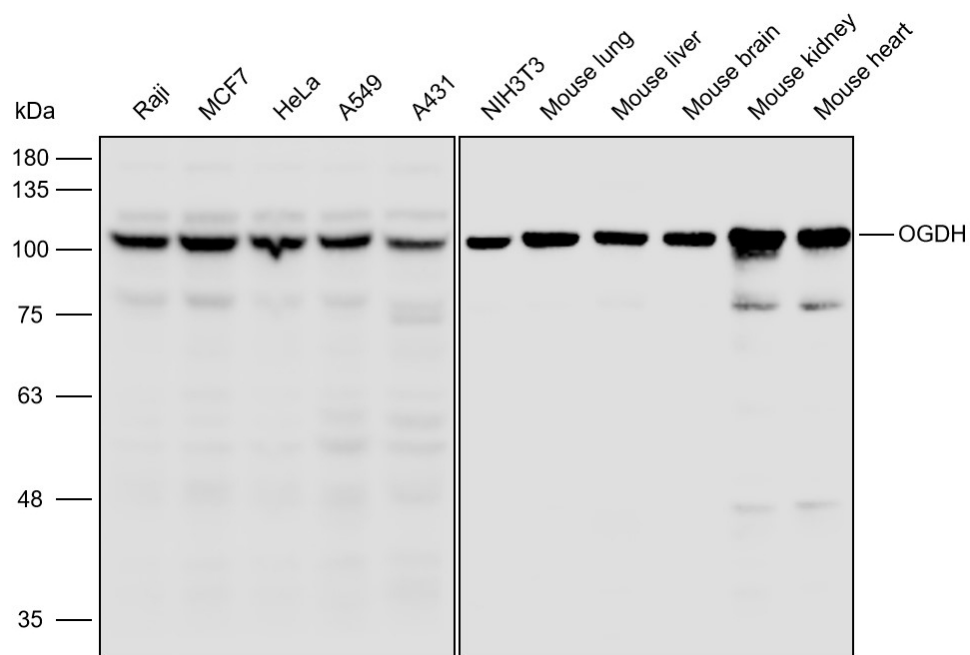
### Summary:

【Product name】 : Anti-OGDH antibody	【Source】 : Rabbit
【Isotype】 : IgG	【Species reactivity】 : Human Mouse
【Swiss Prot】 : Q02218	【Gene ID】 : 4967
【Calculated】 : MW:48/116kDa	【Observed】 : MW:105/110kDa
【Purification】 : Affinity purification	
【Tested applications】 : WB	
【Recommended dilution】 : WB 1:1000-3000.	
【WB Positive sample】 : Raji,MCF7,HeLa,A549,A431,NIH3T3,Mouse lung,Mouse liver,Mouse brain,Mouse kidney,Mouse heart	
【Subcellular location】 : Cytoplasm Nucleus	
【Immunogen】 : Recombinant protein of human OGDH	
【Storage】 : Shipped at 4°C. Upon delivery aliquot and store at -20°C	

### Background:

2-oxoglutarate dehydrogenase (E1) component of the 2-oxoglutarate dehydrogenase complex, which mediates the decarboxylation of alpha-ketoglutarate. The 2-oxoglutarate dehydrogenase complex catalyzes the overall conversion of 2-oxoglutarate to succinyl-CoA and CO<sub>2</sub>. The 2-oxoglutarate dehydrogenase complex is mainly active in the mitochondrion. A fraction of the 2-oxoglutarate dehydrogenase complex also localizes in the nucleus and is required for lysine succinylation of histones: associates with KAT2A on chromatin and provides succinyl-CoA to histone succinyltransferase KAT2A.

## Verified picture



Western blot analysis with OGDH antibody diluted at 1:2000; Lane: Raji, MCF7, HeLa, A549, A431, NIH3T3, Mouse lung, Mouse liver, Mouse brain, Mouse kidney, Mouse heart