

## SAlexa Fluor 405 Conjugated Antibody

### Summary:

**Quantity size:** 0.1mL/0.5mL

**Concentration:** 2mg/mL Buffer=0.01M PBS (pH7.4) with 1% BSA, 0.03% Proclin300 and 50% Glycerol.

**Storage:** Shipped at 4°C, Store at -20°C at least one year (Avoid repeated freeze/thaw cycles).

**Purification method:** Protein A/G

### Background:

SAlexa Fluor is a fluorescent dye with stronger stability and better fluorescence intensity. SAlexa Fluor 405 conjugated antibody is a kind of immunochemistry reagents widely used in immunology, molecular biology and various branches of clinical medicine. The various SAlexa Fluor 405 labeled antibodies developed by Solarbio are all self-prepared immune serums. The immune serums are purified by affinity chromatography to obtain high-purity IgG.

### Application:

IF=1:50-500

Excitation spectrum: 404nm

Emission spectrum: 431nm

Not yet tested in other applications.

Dilution is subject to the product label. Optimal working dilutions must be determined by the end user.

### Related products:

SPA131 Goat anti-mouse IgG (purified)

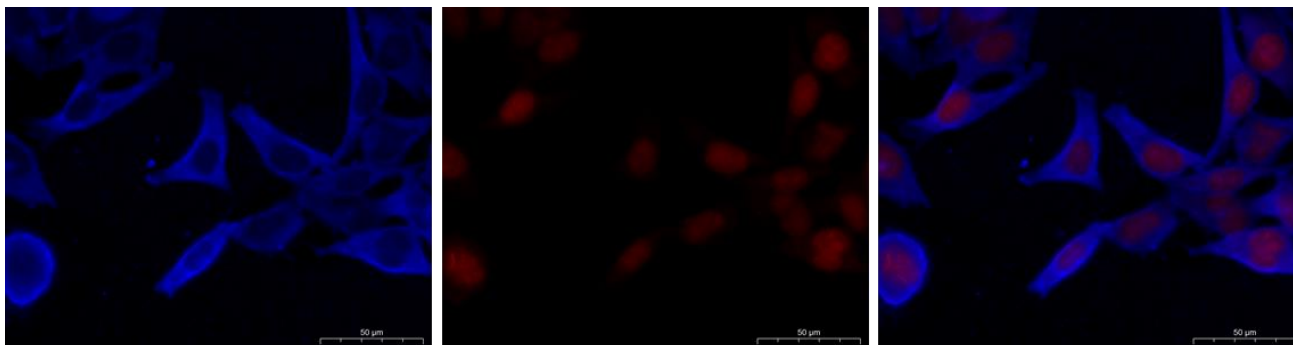
SA134 Goat anti-rabbit IgG (immune serum)

SF134 Goat anti-rabbit IgG-FITC

SE237 Rabbit anti-pig IgG-HRP

K1031G-Cy3 Goat anti-Mouse IgG/ Cy3

### Product Image:



Immunofluorescence analysis of Goat anti-mouse IgG/ SAlexa Fluor405 (K1031G-AF405) was performed using HeLa cells stained with Anti- $\alpha$ -tubulin Monoclonal Antibody (K200064M). The cells were fixed with 4% paraformaldehyde for 10 minutes, permeabilized with 0.1% Triton X-100 for 10 minutes, blocked with 1% BSA for 1 hour and labeled with Anti- $\alpha$ -tubulin Monoclonal Antibody for 2 hours at RT. Goat anti-mouse IgG/ SAlexa Fluor 405 (K1031G-AF405) was used at 1:100 in phosphate buffered saline containing 0.2% BSA for 45 minutes at RT, for detection of  $\alpha$ -tubulin in the cytoplasm (blue). Nuclei (red) were stained with PI (C0080).

**Important Note:** This product as supplied is intended for research use only, not for use in human, therapeutic or diagnostic applications.

Sales: [sales@solarbio.com](mailto:sales@solarbio.com) [sales-china@solarbio.com](mailto:sales-china@solarbio.com)

Tech: [immunoservice@solarbio.com](mailto:immunoservice@solarbio.com)

Tel: 400-968-6088

For research use only  
For more information visit [www.solarbio.com](http://www.solarbio.com)