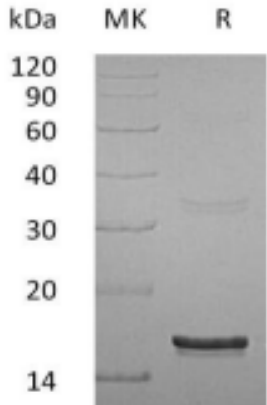
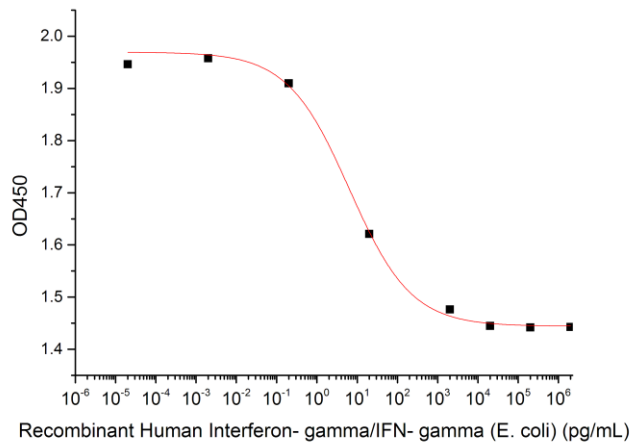


Recombinant Human IFN-Gamma

Catalog#:P00041 Derived from *E.coli*

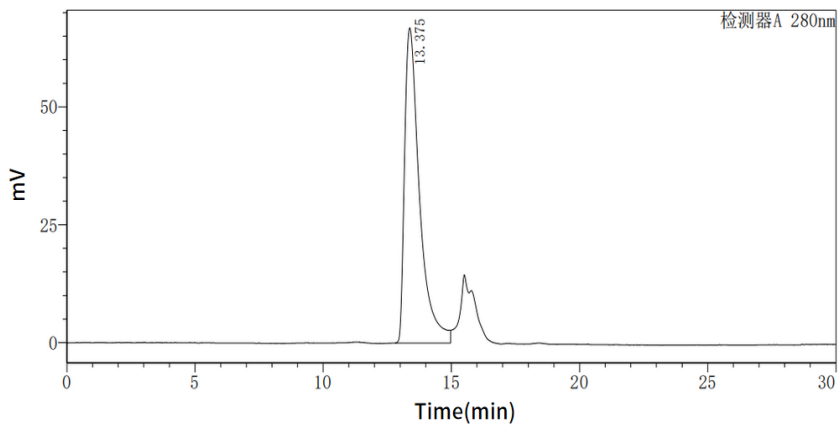
DESCRIPTION	<p>Recombinant Human Interferon Gamma is produced by our <i>E.coli</i> expression system and the target gene encoding Gln24-Gln166 is expressed. Accession#:P01579 Known as:Interferon Gamma; IFN-Gamma; Immune Interferon; IFNG</p>
FORMULATION	Lyophilized from a 0.2 μ m filtered solution of 20mM PB, 5% Sucrose, 4% Mannitol, 0.02% Tween 80, pH7.4.
SHIPPING	The product is shipped at ambient temperature. Upon receipt, store it immediately at the temperature listed below.
STORAGE	Lyophilized protein should be stored at $\leq -20^{\circ}\text{C}$, stable for one year after receipt. Reconstituted protein solution can be stored at 2-8 $^{\circ}\text{C}$ for 2-7 days. Aliquots of reconstituted samples are stable at $\leq -20^{\circ}\text{C}$ for 3 months.
RECONSTITUTION	<p><i>Always centrifuge tubes before opening. Do not mix by vortex or pipetting. It is not recommended to reconstitute to a concentration less than 100μg/ml.</i> Dissolve the lyophilized protein in distilled water. Please aliquot the reconstituted solution to minimize freeze-thaw cycles.</p>
QUALITY CONTROL	<p>Mol Mass: 16.88kDa AP Mol Mass: 16kDa, reducing conditions. Purity: Greater than 95% as determined by reducing SDS-PAGE. Endotoxin: < 0.01 EU/μg as determined by LAL test.</p>
BACKGROUND	<p>IFNγ is the major interferon produced by mitogenically or antigenically stimulated lymphocytes. It is structurally different from type I interferon and its major activity is immunoregulation. It has been implicated in the expression of class II histocompatibility antigens in cells that do not normally produce them, leading to autoimmune disease. Interferon gamma is produced mainly by T-cells and natural killer cells activated by antigens, mitogens, or alloantigens. It is produced by lymphocytes expressing the surface antigens CD4 and CD8. IFNγ synthesis is induced by IL-2, FGF-basic, and EGF.</p>
SDS-PAGE	 <p>kDa MK R</p> <p>120 90 60 40 30 20 14</p>

Bioactivity-Cell Based Assay:



Measured by a cytotoxicity assay using HT-29 cells.
The ED50 for this effect is 17 pg/ml.

Purity-SEC-HPLC:



Greater than 95% as determined by SEC-HPLC.